

# UNA

TOWN SQUARE DUBAI



by NSHAMMA



STAY  
positive

WORK  
hard

MAKE IT  
happen

THE  
FUTURE  
DEPENDS  
ON WHAT  
YOU DO  
TODAY

BE  
YOURSELF  
EVERYONE  
ELSE  
IS  
ALREADY

# welcome

TO YOUR WORLD

**Embracing individuality while connecting with different cultures in a space that takes care of everything for you to be at your efficient and productive best.**



UNA has been created for the new generation of millennials, fast-paced entrepreneurs and creative minds longing for a collaborative, urban hub that provides a hip environment for modern living.

Creating communities in an environment that offers an interactive, engaging and invigorating space.

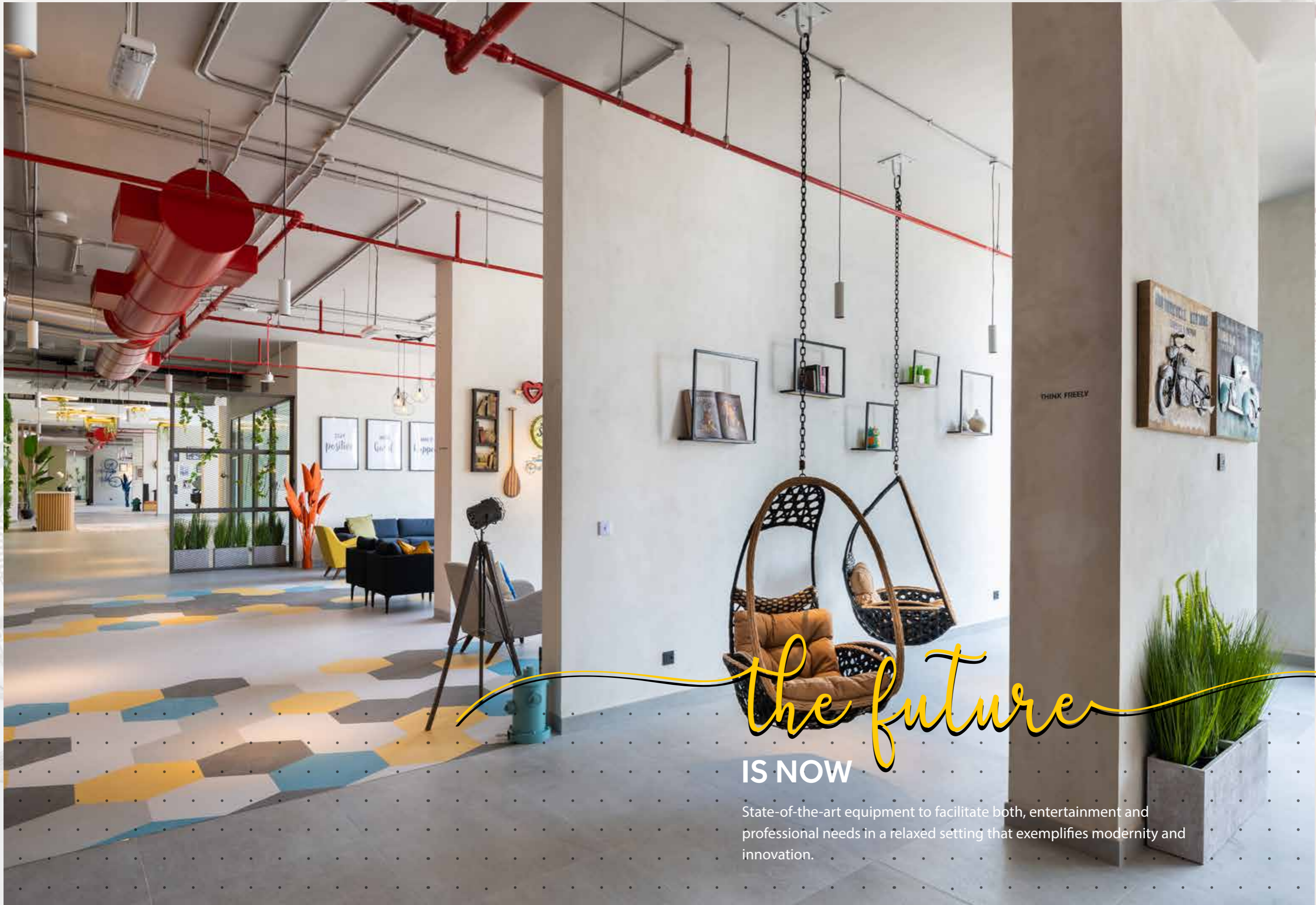


Convenience at your fingertips, flexibility and facilities to encourage a sense of community in very generous spaces.

Time to celebrate a new era of living.

**Building an array of subcultures close to each other, exposed to each other's influence.**

Dubai thrives on collaboration, creativity and innovation, making it one of the best cities to live in. UNA is a reflection of our thriving city and blends an entrepreneurial spirit with an urban setting. It features the most cutting-edge facilities catering to individuals and collaborative communities. Unique and convenient features are integrated throughout in order to mirror a natural environment for creativity.

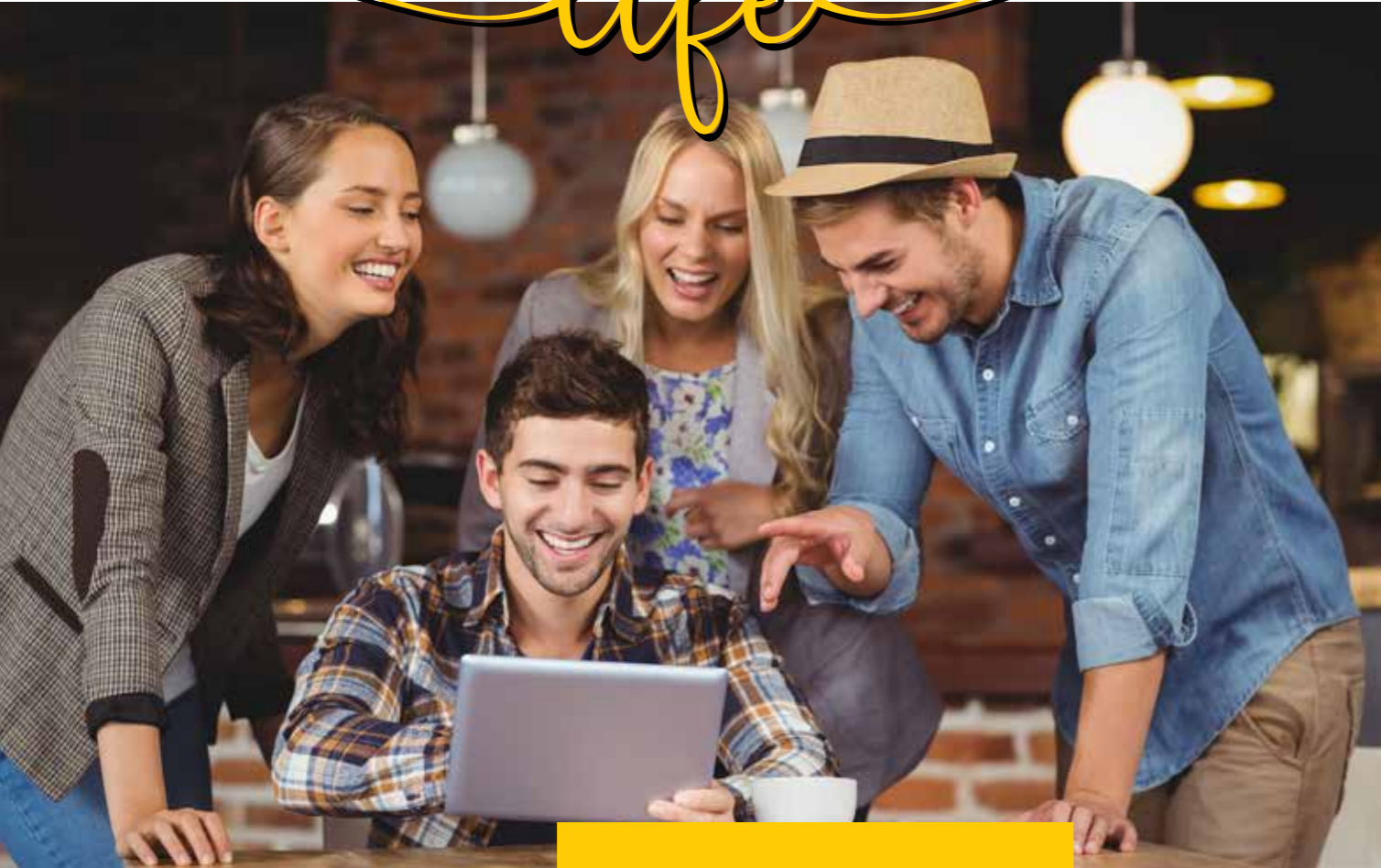


# *the future*

**IS NOW**

State-of-the-art equipment to facilitate both, entertainment and professional needs in a relaxed setting that exemplifies modernity and innovation.

# ENJOY *life*



- . Creating communities & lifestyles
- . Sharing moments & knowledge
- . Achieving greatness
- . Living in the present
- . Inspiring others
- . Evolving and succeeding
- . A positive social environment
- . Collaborating
- . Winning

Life is all about the moments.  
We let you create these moments at UNA, with like-minded individuals. Together, we achieve greatness



**Spaces to work, connect, learn & create with fellow game changers and innovators.**





SLEEK, MODERN

*interiors*

Minimalistic and modern surroundings inspired by new age style.

# WORK HARD PLAY HARD



Step into a world that is as progressive as it is visual in nature. Enjoy a genuine sense of community, using shared spaces and facilities to create a more fulfilling lifestyle. Take advantage of an opportunity that lets you connect with like-minded people, living and working together in a creative-driven environment. Welcome to a re-defined world where you choose to live, work & play under one roof.



UNA's interiors exudes an energy within its spaces that make you feel as though there are endless possibilities. Stepping away from the usual norms and into a haven of high-volume concrete, glass, steel and wooden interiors. Expect a stylish, easy to work in and organised area that is flexible and tangible.

The work space and desk layouts are just a few of the key elements to this incredibly productive environment. You cannot help but fall in love with the hip, entrepreneurial and urban vibe that it asserts.

**For those that  
value openness, sharing,  
creativity &  
a purpose-driven life.**





# play



**Work hard, play harder. Unwind when you need a break.**



**Energise and revitalise at any given hour with healthy, nutritious options.**



**Fuel up at your leisure with a variety of cafés.**



**Host and entertain co-workers and friends at your convenience.**

## SLEEK, MODERN, STATE-OF-THE-ART FACILITIES



*collaborate*

Styled with a mix of modern furnishing, crafted objects and contemporary pieces, we have created a personified, breathable atmosphere that facilitates the new generation. It's all about bringing individuals together to create a community that collaborates and thinks outside the box. A space that lets you establish quality relationships while firmly embedding itself within its surroundings.





Pool, gym and park to cater to your mind and body are some of the amenities that UNA provides along with an open-minded and creative community that you can share everyday experiences with.

We let you focus on you and doing what you love best. Re-energise and revitalise in your own mini eco-system of tech facilities, cafés, lounge spaces & entertainment areas.

A NEW ERA OF

*living*





## CREATING CONNECTIONS

UNA is not just another living space. We have designed spaces that favour exploration and cultivate interactions. By creating connections between people from different walks of life, UNA embraces differences and creates a sense of unity in the most diverse city that is occupied by creative and innovative minds from all over the globe.

## MAKE LONG LASTING FRIENDSHIPS

We believe that great things are achieved by working together, that driven and creative people need to be inspired by their surroundings and the people around them. Our work spaces are where ideas are born, deals are made, checklists are ticked and projects take flight.

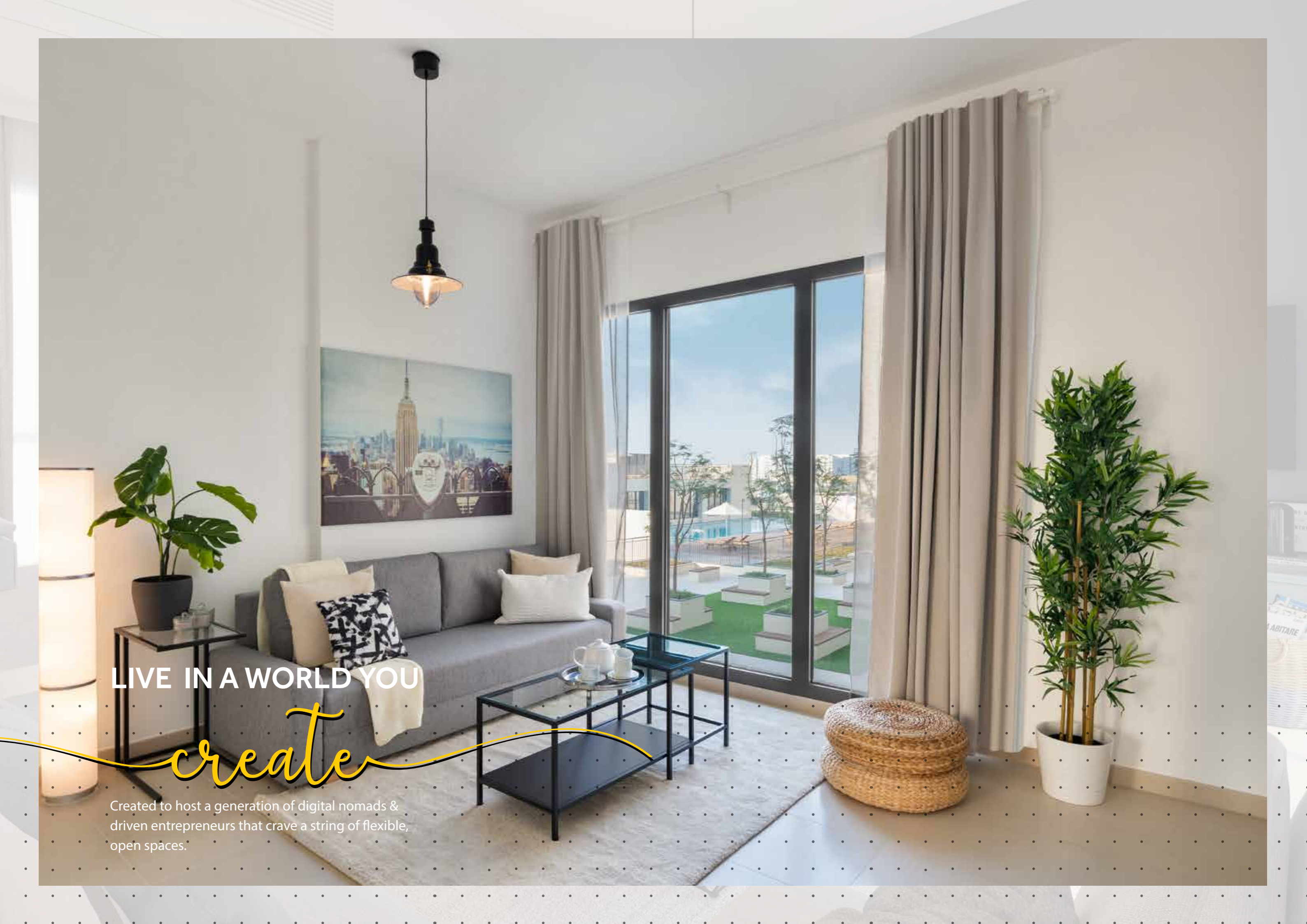




**It's not just  
a home, it's a  
movement.  
A lifestyle that  
you create and  
nurture while  
building deeper  
connections.**

Syncing and creating harmonies with like-minded individuals who are the future of our city, UNA's innovative environment provides a spiritual and physical atmosphere to connect, create & collaborate.

UNA is the medium that brings individuals together to exchange and build ideas. We focus on personifying experiences to craft melodies with the new generation.



LIVE IN A WORLD YOU

*create*

Created to host a generation of digital nomads & driven entrepreneurs that crave a string of flexible, open spaces.

# THE MASTER PLAN

Town Square Dubai

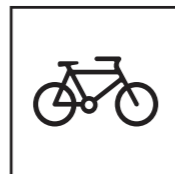


UNA  
APARTMENTS

TownSquareFacts



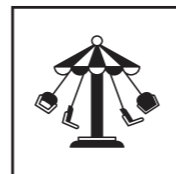
Green & Jogging Trails



Cycling Trail



Green Area



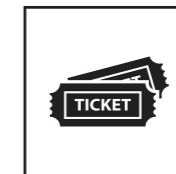
Town Square Park



Sports Area



Retail Outlets



Cinemas



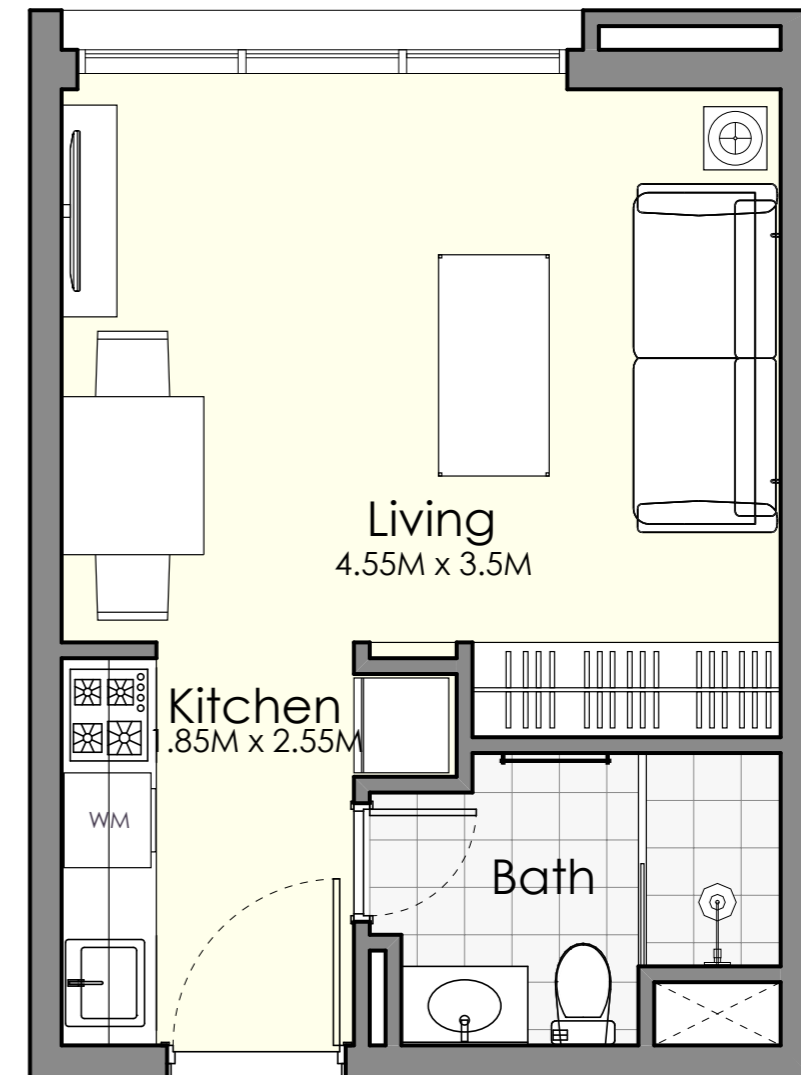
Boutique Hotel



## STUDIO

Unit Type ST-A

AREA	MIN	MAX
SUITE	(32.14 Sq.m / 345.95 Sq.ft)	(32.81 Sq.m / 353.16 Sq.ft)
SALEABLE AREA	(32.14 Sq.m / 345.95 Sq.ft)	(32.81 Sq.m / 353.16 Sq.ft)



### Disclaimer

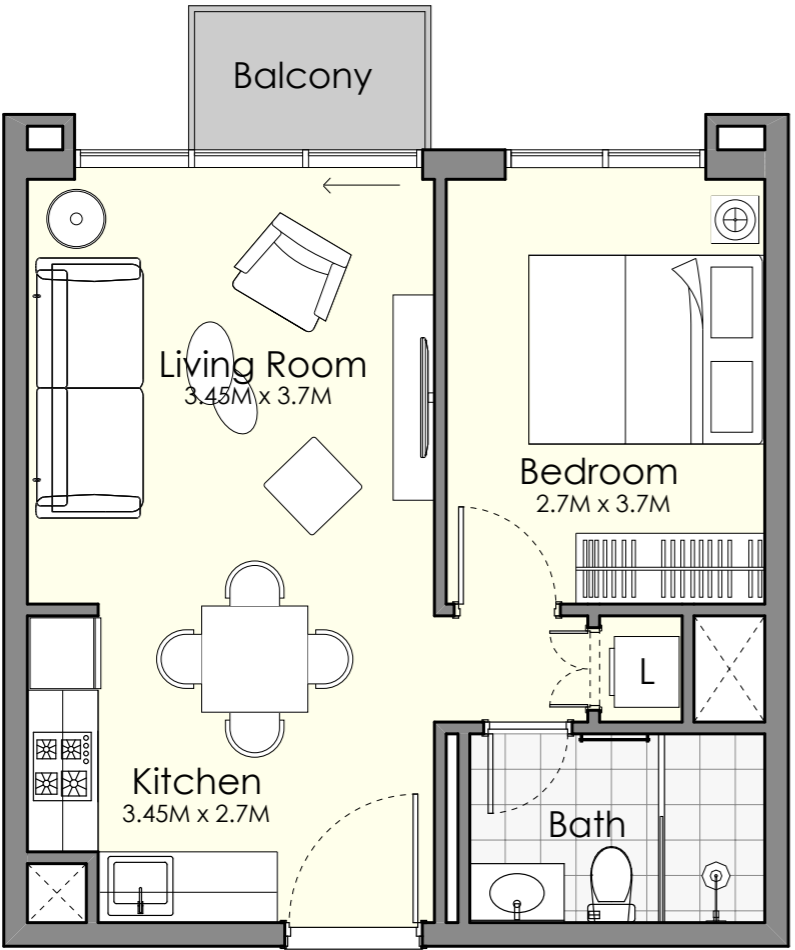
1. All room dimensions are in metric and measured to structural elements and exclude wall finishes and construction tolerances.
2. All dimensions have been provided by our consultant architects.
3. All materials, dimensions, drawings features and amenities are approximate at the time of printing.
4. Actual area may vary from stated area and unit direction may vary from unit to unit. Drawings not to scale E&EO. The developer reserves the right to make revisions to the floor plans and any features, materials, dimensions, drawings and amenities mentioned in this brochure without notice.



# 1 BEDROOM

## Unit Type 1-A

AREA	MIN	MAX
SUITE	(41.99 Sq.m / 452.08 Sq.ft)	(42.29 Sq.m / 455.21 Sq.ft)
TERRACE	(2.52 Sq.m / 27.13 Sq.ft)	(2.52 Sq.m / 27.13 Sq.ft)
SALEABLE AREA	(44.52 Sq.m / 479.21 Sq.ft)	(44.81 Sq.m / 482.33 Sq.ft)



**Disclaimer**

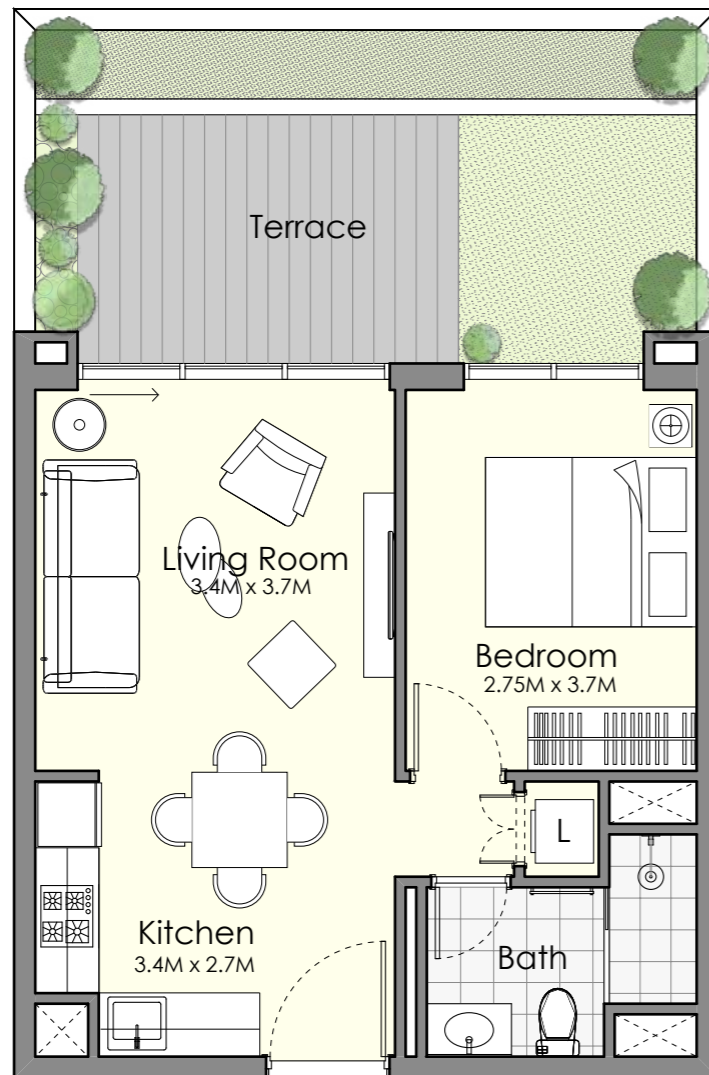
- 1. All room dimensions are in metric and measured to structural elements and exclude wall finishes and construction tolerances.
- 2. All dimensions have been provided by our consultant architects.
- 3. All materials, dimensions, drawings features and amenities are approximate at the time of printing.
- 4. Actual area may vary from stated area and unit direction may vary from unit to unit. Drawings not to scale E&EO. The developer reserves the right to make revisions to the floor plans and any features, materials, dimensions, drawings and amenities mentioned in this brochure without notice.



# 1 BEDROOM

## Unit Type 1-D

AREA	MIN	MAX
SUITE	(41.80 Sq.m / 449.93 Sq.ft)	(41.89 Sq.m / 450.90 Sq.ft)
TERRACE	(21.49 Sq.m / 231.32 Sq.ft)	(21.58 Sq.m / 232.29 Sq.ft)
SALEABLE AREA	(63.29 Sq.m / 681.25 Sq.ft)	(63.47 Sq.m / 683.19 Sq.ft)



### Disclaimer

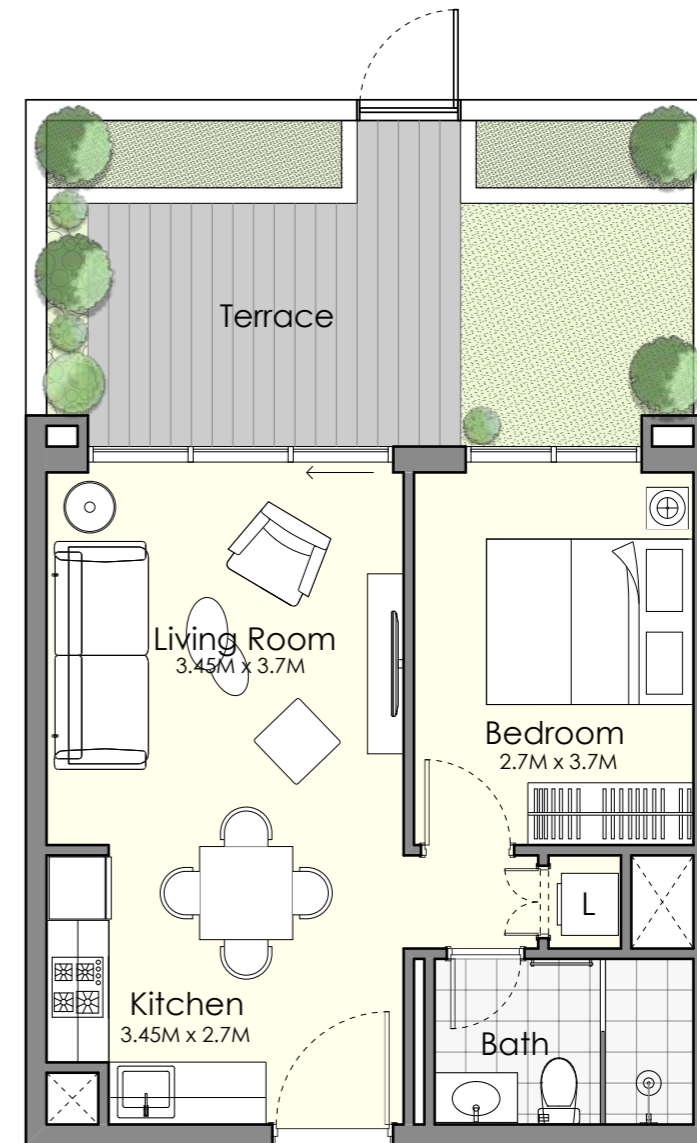
1. All room dimensions are in metric and measured to structural elements and exclude wall finishes and construction tolerances.
2. All dimensions have been provided by our consultant architects.
3. All materials, dimensions, drawings features and amenities are approximate at the time of printing.
4. Actual area may vary from stated area and unit direction may vary from unit to unit. Drawings not to scale E&EO. The developer reserves the right to make revisions to the floor plans and any features, materials, dimensions, drawings and amenities mentioned in this brochure without notice.



## 1 BEDROOM

Unit Type 1-E

AREA	MIN	MAX
SUITE	(41.93 Sq.m / 451.33 Sq.ft)	(42.21 Sq.m / 454.34 Sq.ft)
TERRACE	(21.50 Sq.m / 231.42 Sq.ft)	(24.20 Sq.m / 260.49 Sq.ft)
SALEABLE AREA	(63.45 Sq.m / 682.97 Sq.ft)	(66.22 Sq.m / 712.79 Sq.ft)



### Disclaimer

1. All room dimensions are in metric and measured to structural elements and exclude wall finishes and construction tolerances.
2. All dimensions have been provided by our consultant architects.
3. All materials, dimensions, drawings features and amenities are approximate at the time of printing.
4. Actual area may vary from stated area and unit direction may vary from unit to unit. Drawings not to scale E&O. The developer reserves the right to make revisions to the floor plans and any features, materials, dimensions, drawings and amenities mentioned in this brochure without notice.



*live*

## IN UNA

UNA is a reflection of our thriving city and is a blend of sustainability and influence in an urban setting that features the most cutting-edge equipment catering to individuals and collaborative communities.

UNA

TOWN SQUARE DUBAI

by NSHAMA



TownSquareDXB

800 - NSHAMA ( 674262 )

NSHAMA Sales Centre, Mohammed Bin Rashid Boulevard, Downtown Dubai, UAE

NSHAMA.AE